



Battery Lift Box Kit

Models: T300, T300e, Speed Scrub 300, A300



This kit is intended for quick or frequent battery pack exchange. This allows user to recharge an additional set of batteries with an off-board battery charger.

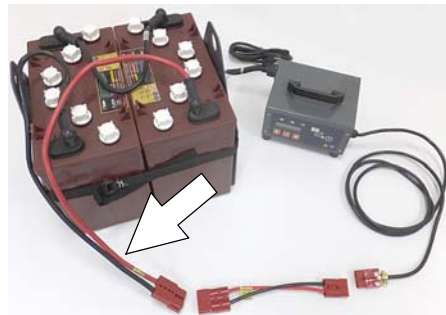
NOTICE: If machine is not currently equipped with the quick disconnect battery cables as shown below, a specific battery cable kit is required with the battery lift box kit as listed below (See Parts Manual for further details).



Required Battery Cable Kits

- 9014778 Cable Kit, Ring [T300]
(includes ring terminal battery connectors)
- 9014780 Cable Kit, Clamp [T300]
(includes clamp terminal battery connectors)
- 9014781 Cable Kit, Ring [T300e/SS300]
(includes ring terminal battery connectors)
- 9014782 Cable Kit, Clamp [T300e]
(includes clamp terminal battery connectors)

Also, for each additional battery pack the following battery connector cable is required:



- 1073628 Cable, Battery, w/ Ring Connectors
- 1074524 Cable, Battery, w/ Clamp Connectors

INSTALLATION INSTRUCTIONS:

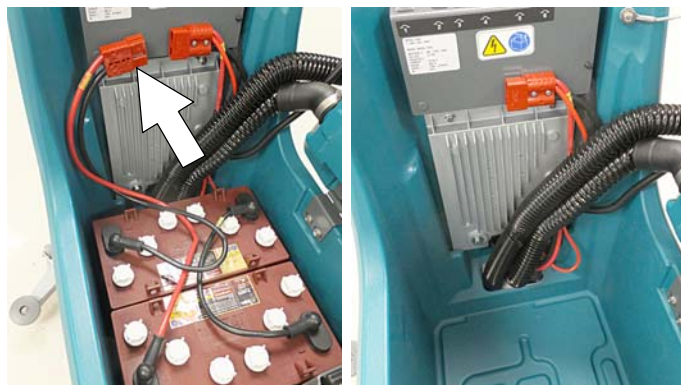
Installation Time: 1 Hour

Tools Required: 10 mm socket wrench & wire cutters.

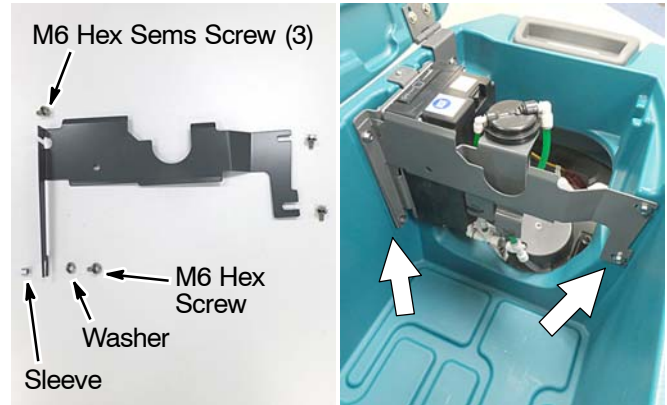
FOR SAFETY: Before servicing machine, stop on level surface, turn key off and set parking brake if equipped.

FOR SAFETY: When handling batteries, wear appropriate personal protection equipment as needed. Avoid contact with battery acid.

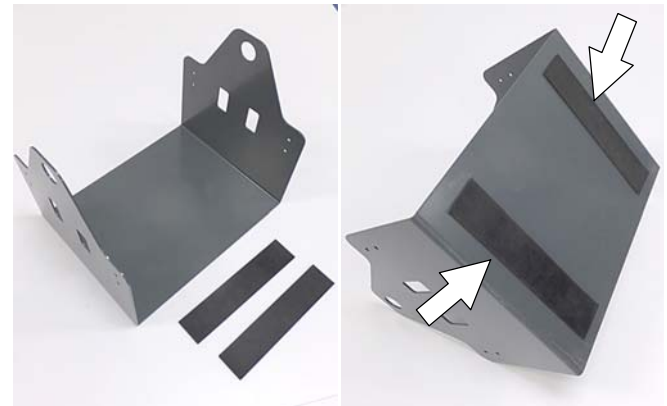
1. Disconnect battery cables and carefully remove batteries from machine.



2. Using hardware provided, install deflector bracket to machine as shown.



3. Adhere the two pads to bottom of battery box as shown.



4. Route battery strap through battery box slots and secure strap with 4 cable-ties as shown.



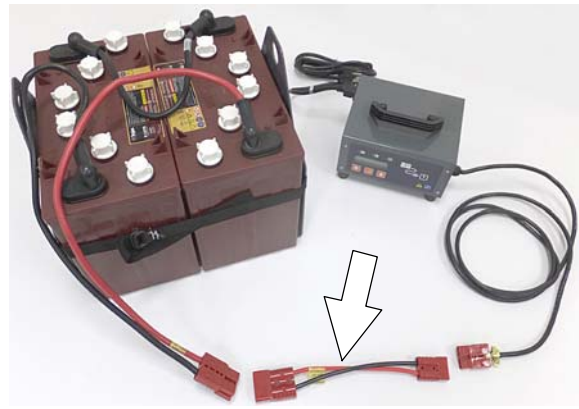
5. Carefully place batteries in battery box and secure batteries with strap as shown.



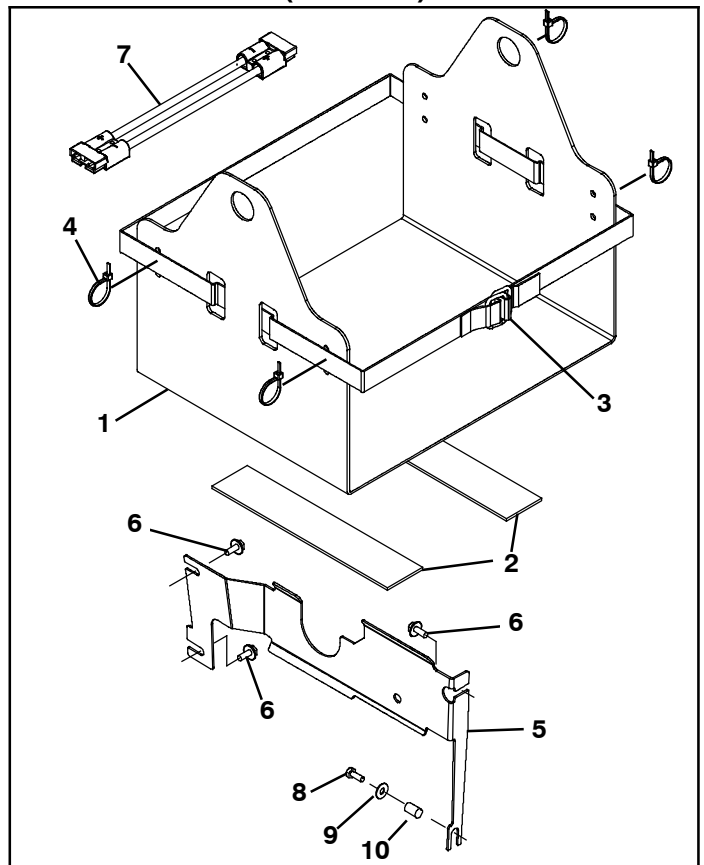
6. Using an approved lift strap that supports the weight of battery pack, connect the strap to the two lift brackets as shown. Using a lift hoist rated to handle the weight of the battery pack, carefully lift the battery packs to and from machine. Keep one hand on the battery lift box when lifting for stability. Before lifting battery pack, make sure the batteries are secured to the battery lift box with the supplied battery strap as shown.



7. Use the supplied battery cable adaptor to connect battery pack to off-board charger.



BATTERY LIFT BOX KIT CONTENTS (9014173)



Ref.	Part No.	Description	Qty
1	1207816	Box, Battery [Lift-Out]	1
2	1212689	Pad, Box, Battery	2
3	1208697	Strap, Pyp, Buckle, Friction	1
4	130773	Tie, Cable, Nyl, 11.0l, .14w, 3.0 Max. D	4
5	1214509	Bracket, Deflector, Battery	1
6	1034731	Screw, Hex, M6 X 1.00 X 16, Sems, Ss	3
7	1074798	Cable, Adaptor, Batt (For Off- Board Chargers)	1
8	11329	Screw, Hex, M6 X 1.00 X 16, NI, Ss	1
9	01684	Washer, Flat, 0.27b 0.69d .05, Ss	1
10	140154	Sleeve, p/m, 0.25B 0.38d 0.3L, pl	1